

Model MLP40 Circuit Board Mountable Pressure Sensor

Measurement Ltd model **MLP40** Pressure Transducer was developed for low cost printed circuit board mounted pressure measurements. The design incorporates state of art digital temperature correction of a micro-machined silicon pressure die for high end accuracy and stability. The design offers a very cost effective solution for the not so demanding pressure measurement environments. The wetted parts are 316 SS, Silicon, Pyrex and RTV/epoxy.



- **Gauge and Absolute Pressures**
- **1 % Total Error Band**
- **5 Volt DC Supply**
- **0.5 to 4.5 Output (ratio-metric)**
- **ASIC Temperature Compensated**
- **PC Board mountable**
- **Silicon on Stainless**
- **Barbed fitting or O-Ring Seal**
- **Wet or Dry application**
- **Light Weight**

Sample Applications:

- Process Automation & Control
- Level Measurement
- Test and Measurement Equipment
- Factory Automation

Specifications

Supply: 4.5 to 5.5 VDC

Output: 0.5 to 4.5 (ratio-metric to supply)

Supply Current: 5 mA (max)

Output Impedance: <100 ohms

Total Error Band: 1 % FSO

Compensated Range: 0 to 55 deg C

Operating Range: -40 to 100 deg C

Proof Pressure: 2X full scale

Burst Pressure: 3X full scale

Wetted Parts: 316 SS, Silicon, Pyrex and RTV/epoxy

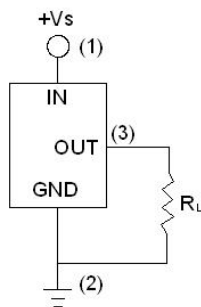
Process Fitting: Barbed hose, O-Rings, Others

Model MLP40 Circuit Board Mountable Pressure Sensor

Performance (specified @ 25 deg C, 5 .00 VDC supply)	
Supply Voltage	5 +/- 0.5 VDC
Output	0.5 to 4.5 VDC (ratio-metric with supply)
Supply Current	< 5 mA
Error	+/- 1.00 FS TEB
Zero Offset	0.50 VDC
Full Scale Output	4.50 VDC
Compensated Temperature Range	0 to 85 deg C
Operating Temperature Range	-40 to 100 deg C
Storage Temperature Range	-40 to 85 deg C
Burst Pressure	3 X Full Scale
Proof Pressure	3 X Full Scale
Reliability	
Stability (typical)	<+/- .30% full scale per year
Pressure Cycles	10 million full scale cycles
Vibration	10 to 2000 Hz. 10g 3 axes sine wave. 100 hours
Weight	
Humidity	

MLP40	xxxx	x	x	x	x
Product Model	Pressure Range	Reference	Pressure Port	Connection Option	Custom Dash Configuration
	0005=0.5 psi	A=Absolute	1=3/16 Barb	1=Bottom PCB mount	
	0015=1.5 psi	G=Gauge	2=3/16 O-Ring		
	0150=15 psi		x= Other		
	0500=50 psi				
	1000=100 psi				
	1500=150 psi				

ELECTRICAL CONNECTION



Dimensions:In inches

